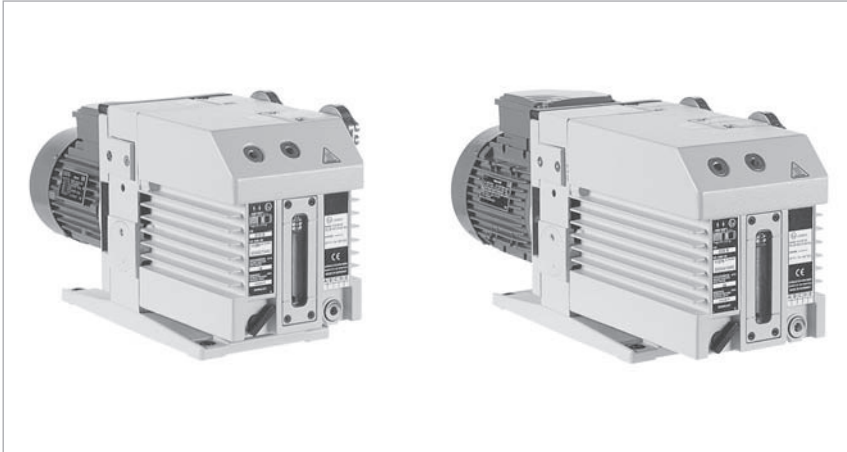
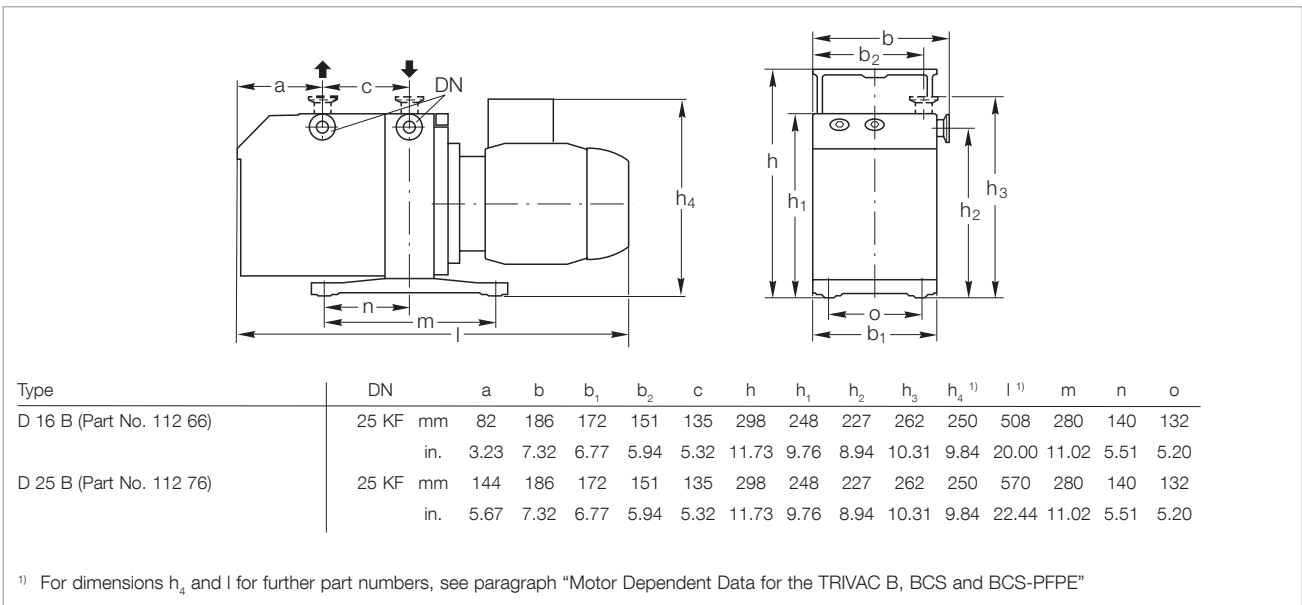


# TRIVAC D 16 B and D 25 B



TRIVAC D 16 B (left) and TRIVAC D 25 B (right)



Dimensional drawing for the TRIVAC D 16 and D 25 B

**Technical Data**

**TRIVAC D 16 B**

**TRIVAC D 25 B**

**two-stage**

**two-stage**

**50 Hz**

**60 Hz**

**50 Hz**

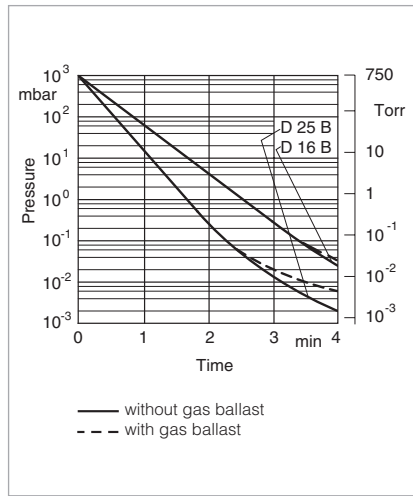
**60 Hz**

Nominal pumping speed <sup>1)</sup>	m <sup>3</sup> /h (cfm)	18.9 (11.1)	22.7 (13.4)	29.5 (17.4)	35.4 (20.9)
Pumping speed <sup>1)</sup>	m <sup>3</sup> /h (cfm)	16.5 (9.7)	19.8 (11.7)	25.7 (15.1)	30.8 (18.2)
Ultimate partial pressure without gas ballast <sup>1)</sup>	mbar (Torr)	10 <sup>-4</sup> (0.75 x 10 <sup>-4</sup> )	10 <sup>-4</sup> (0.75 x 10 <sup>-4</sup> )	10 <sup>-4</sup> (0.75 x 10 <sup>-4</sup> )	10 <sup>-4</sup> (0.75 x 10 <sup>-4</sup> )
Ultimate total pressure without gas ballast <sup>1)</sup>	mbar (Torr)	< 2 x 10 <sup>-3</sup> (1.5 x 10 <sup>-3</sup> )	< 2 x 10 <sup>-3</sup> (1.5 x 10 <sup>-3</sup> )	< 2 x 10 <sup>-3</sup> (1.5 x 10 <sup>-3</sup> )	< 2 x 10 <sup>-3</sup> (1.5 x 10 <sup>-3</sup> )
Ultimate total pressure with gas ballast <sup>1)</sup>	mbar (Torr)	< 5 x 10 <sup>-3</sup> (3.8 x 10 <sup>-3</sup> )	< 5 x 10 <sup>-3</sup> (3.8 x 10 <sup>-3</sup> )	< 5 x 10 <sup>-3</sup> (3.8 x 10 <sup>-3</sup> )	< 5 x 10 <sup>-3</sup> (3.8 x 10 <sup>-3</sup> )
Water vapor tolerance <sup>1)</sup>	mbar (Torr)	25.0 (18.8)	25.0 (18.8)	25.0 (18.8)	25.0 (18.8)
Water vapor capacity	g/h (lbs/h)	305 (0.672)	370 (0.816)	480 (1.058)	570 (1.257)
Oil filling, min. / max.	l (qt)	0.5 / 1.0 (0.5 / 1.1)	0.5 / 1.0 (0.5 / 1.1)	0.6 / 1.4 (0.6 / 1.5)	0.6 / 1.4 (0.6 / 1.5)
Noise level <sup>2)</sup> to DIN 45 635, without / with gas ballast	dB(A)	54 / 56	54 / 56	54 / 56	54 / 56
Admissible ambient temperature	°C (°F)	+12 to +40 (+54 to +104)	+12 to +40 (+54 to +104)	+12 to +40 (+54 to +104)	+12 to +40 (+54 to +104)
Motor rating <sup>2)</sup>	W (HP)	550 - 750 (0.75 - 1.0)	550 - 750 (0.75 - 1.0)	750 (1)	750 (1)
Nominal speed	rpm	1500	1800	1500	1800
Type of protection	IP	<sup>3)</sup>	<sup>3)</sup>	<sup>3)</sup>	<sup>3)</sup>
Weight <sup>2)</sup>	kg (lbs)	31.5 (69.3)	31.5 (69.3)	41.4 (91.1)	41.4 (91.1)
Connections, Intake and Exhaust	DN	25 KF	25 KF	25 KF	25 KF

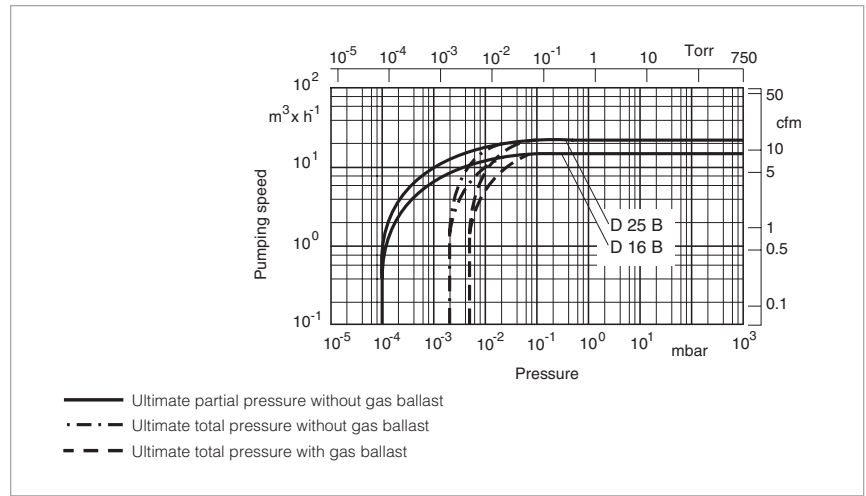
<sup>1)</sup> To DIN 28 400 and following numbers

<sup>2)</sup> Motor rating and noise levels for the pumps with AC motor 50 Hz.  
Any data that deviate from the above for pumps with other motors, and other motor-dependent data are given in chapter "Products", paragraph "Motor Dependent Data for the TRIVAC B, BCS and BCS-PFPE"

<sup>3)</sup> See paragraph "Motor Dependent Data for the TRIVAC B, BCS and BCS-PFPE"



Pump-down characteristics of a 100 l vessel at 50 Hz



Pumping speed characteristics at 50 Hz (60 Hz curves at the end of the chapter)

## Ordering Information

### TRIVAC D 16 B

#### two-stage

### TRIVAC D 25 B

#### two-stage

	Part No.	Part No.
<b>TRIVAC B</b>		
with 1-phase motor		
230 V, 50/60 Hz <sup>1)</sup>	<b>112 65</b>	<b>112 75</b>
218-242 V, 50/60 Hz <sup>1)</sup>	<b>113 25 <sup>2)</sup></b>	<b>113 35 <sup>2)</sup></b>
110/220 V, 50 Hz / 115/208-230 V, 60 Hz <sup>3)</sup>	<b>898 698</b>	-
with 3-phase motor		
200-240 V (200 V IE2) / 380-400 V (380-400 V IE 2), 50 Hz / 200-240 (208-240 V EPact) / 380-480 V (416-480 V EPact), 60 Hz <sup>1)</sup>	<b>112 66</b> <b>113 33 (LVO 210)</b>	<b>112 76</b>
230/400 V, 50 Hz, ATEX Category 3 inside and 3 outside inside: II (i) 3G IIC T4 (50 Hz) outside: II (o) 3G IIC T3 (50 Hz)	<b>140 160</b>	<b>140 170</b>
<b>Accessories</b>		
Mains cord for Part No. 898 698		
115 V	<b>E 721 27 877</b>	-
230 V	<b>E 721 27 878</b>	-
Dust filter		
Filter pot FH 16	<b>140 125 T</b>	<b>140 125 T</b>
Dust filter insert DF 16-25	<b>140 117 S</b>	<b>140 117 S</b>
Adsorption trap		
Filter pot FH 25	<b>140 125 T</b>	<b>140 125 T</b>
Adsorption filter insert RF 16-25	<b>140 118 A</b>	<b>140 118 A</b>
Accessories for dust filter and adsorption trap		
Active charcoal	<b>178 10</b>	<b>178 10</b>
Zeolite	<b>854 20</b>	<b>854 20</b>
Activated aluminium oxide, 1.3 kg (2 l approx.)	<b>854 10</b>	<b>854 10</b>
AF 16-25 exhaust filter	<b>189 11</b>	<b>189 11</b>
AR 16-25 exhaust filter with lubricant return	<b>189 21</b>	<b>189 21</b>
AK 16-25 condensate trap	<b>188 11</b>	<b>188 11</b>
OF 4-25 mechanical oil filter	<b>101 91</b>	<b>101 91</b>
CF 4-25 chemical oil filter	<b>101 96</b>	<b>101 96</b>
Connector for gas ballast inlet M 16 x 1.5 – DN 16 KF	<b>168 40V01</b>	<b>168 40V01</b>
Oil drain tap M 16 x 1.5	<b>190 90</b>	<b>190 90</b>
<b>Spare Parts</b>		
Inner body	<b>E 200 10 956</b>	<b>E 200 10 960</b>
Major maintenance kit (without oil)	<b>EK 110 002 618</b>	<b>EK 110 002 616</b>
Minor maintenance kit (without oil)	<b>EK 110 002 626</b>	<b>EK 110 002 625</b>
Shaft sealing ring replacement kit	<b>EK 110 002 630</b>	<b>EK 110 002 630</b>
Small parts kit	<b>EK 110 002 635</b>	<b>EK 110 002 635</b>
Seal kit	<b>197 21</b>	<b>197 21</b>
For further accessories see section “Accessories for TRIVAC E, B and BCS”		

<sup>1)</sup> Certification after 94/9/EG (ATEX), Category 3 inside. Inside: II (i) 3G IIC T4 (50 Hz), T3 (60 Hz)

<sup>2)</sup> With cable EURO Schuko. Other cables for wide range motor upon request

<sup>3)</sup> Mains cord for dual voltage motor see paragraph “Motor Dependent Data for the TRIVAC B, BCS and BCS-PFPE”; TRIVAC D 16 B / D 25 B