

Miniature Filter / Regulator

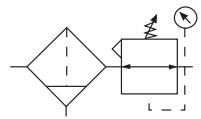
BB3 – Brass

BA3 – Aluminum

= "Most Popular"

B

Filters, Regulators, Lubricators



BB3-02-FK00

Features

- Brass Construction Handles Most Corrosive Environments
- Large Diaphragm to Valve Area Ratio for Precise Regulation and High Flow Capacity
- Plastic Bowl or Black Painted Zinc Metal Bowl
- High Flow: 1/4" -16 SCFM
- Fluorocarbon Seals Optional

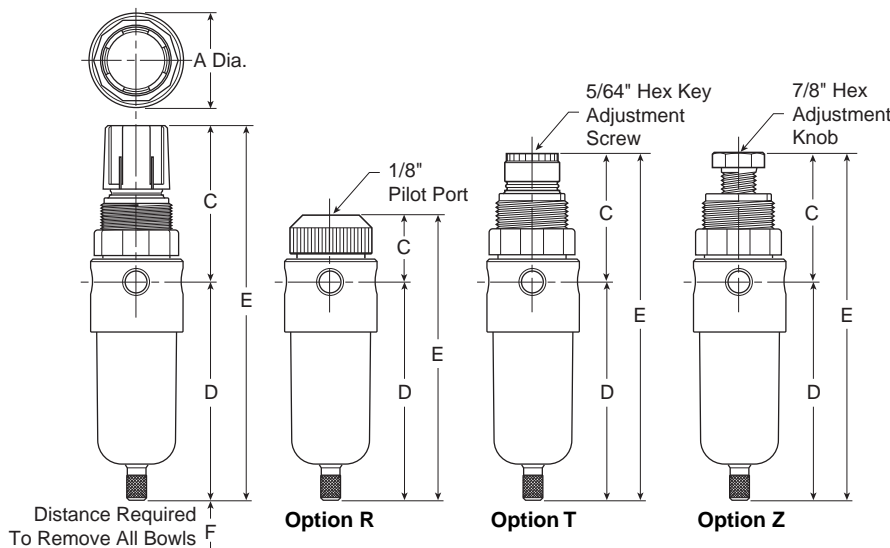
Specifications

Flow Capacity*	1/4	16 SCFM (7.6 dm ³ /s)
Maximum Supply Pressure		
Polycarbonate Bowl		150 PSIG (10.37 bar)
Metal Bowl		300 PSIG (20.7 bar)
Operating Temperature	40°F to 125°F (4.4°C to 52°C)	
Port Size	NPT / BSPP-G	1/8, 1/4
Standard Filtration	5 Micron	
Weight	0.8 lb. (0.36 kg)	

* Inlet pressure 100 PSIG (6.9 bar). Secondary pressure 75 PSIG (5.2 bar).

Materials of Construction

Body	Brass	
Bowls	Polycarbonate or Zinc - Painted Black	
Manual Drain	Brass	
Diaphragm and Seals	Nitrile	
Element Holder / Deflector / Bonnet	Acetal	
Filter Elements	Type A	Polyethylene
Knob	Acetal	
Springs	Plated Steel	
Valve Assembly and Bottom Plug	Brass	



NOTES: Panel Nut included, but not shown on dimensional drawing.
1.19" dia. (30,2) mm hole required for panel mounting.

Dimensions

Model	Inches (mm)	A	C	C			D	E	E			F
				Option R	Option T	Option Z			Option R	Option T	Option Z	
Standard Unit - Brass Body BB3-02-XXXX	1.56 (40)	2.63 (67)	1.09 (27.7)	2.04 (51.8)	2.08 (52.8)	3.63 (92)	6.25 (159)	4.72 (119.9)	5.67 (144.0)	5.71 (145.0)	1.58 (40)	
Standard Unit - Aluminum Body BA3-02-XXXX	1.56 (40)	2.63 (67)	1.09 (27.7)	2.04 (51.8)	2.08 (52.8)	3.63 (92)	6.25 (159)	4.72 (119.9)	5.67 (144.0)	5.71 (145.0)	1.58 (40)	

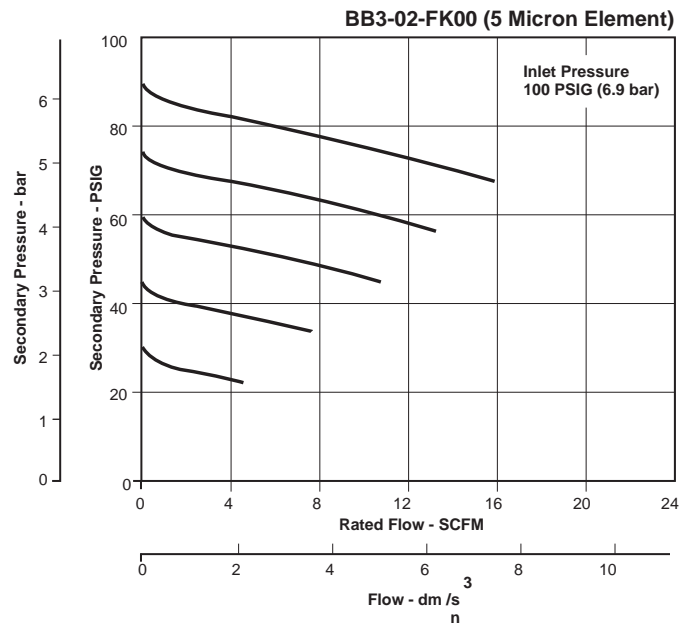
Replacement Element and Repair Kits

- 5 Micron Element.....FRP-96-806
- Bonnet, Knob, Adjusting Screw Kit RRP-96-821
- Bonnet, Tamper Resistant Adjustment Kit RRP-96-822
- Diaphragm and Valve Repair Kit –
 - Relieving.....RRP-96-819
 - Non-Relieving.....RRP-96-820
- Plastic Bowl –
 - No Guard, Manual Twist Drain.....GRP-96-808
 - No Guard, Piston Drain.....GRP-96-809
- Metal Bowl –
 - Manual Twist Drain.....GRP-96-810
 - Piston Drain.....GRP-96-811

Accessories

- Gauge, Pressure –
 - 0 to 60 PSI (0 to 4.1 bar), 1-1/2" Dial Face, 1/8" NPT.....K4515N18060
 - 0 to 160 PSI (0 to 11.0 bar), 1-1/2" Dial Face, 1/8" NPT, CBM.....K4515N18160
- Manual Drain.....GRP-96-812
- Piston Type Drain.....GRP-96-813
- Panel Mount Nut –
 - Aluminum.....RPA-96-733
 - Plastic.....RPA-96-734
- Wall Mounting Bracket –
 - L-Type.....GRP-95-147
 - L-Type with Plastic Panel Mount Nut.....GRP-95-747

= "Most Popular"



B

Filters, Regulators, Lubricators

⚠ WARNING

**Product rupture can cause serious injury.
Do not connect regulator to bottled gas.
Do not exceed maximum primary pressure rating.**

CAUTION:

REGULATOR PRESSURE ADJUSTMENT – The working range of knob adjustment is designed to permit outlet pressures within their full range. Pressure adjustment beyond this range is also possible because the knob is not a limiting device. This is a common characteristic of most industrial regulators, and limiting devices may be obtained only by special design.

For best performance, regulated pressure should always be set by increasing the pressure up to the desired setting.

Ordering Information

Model Type	Port Size	Relieving 2 to 125 PSI (0.14 to 8.6 bar) No Bowl Guard	Relieving 1 to 60 PSI (0.07 to 4.1 bar) No Bowl Guard	Relieving 1 to 25 PSI (0.07 to 1.7 bar) No Bowl Guard	Relieving 2 to 125 PSI (0.14 to 8.6 bar) Metal Bowl	Relieving 1 to 60 PSI (0.07 to 4.1 bar) Metal Bowl	Relieving 1 to 25 PSI (0.07 to 1.7 bar) Metal Bowl
Manual Drain	1/8"	BB3-01-FK00	BB3-01-DK00	BB3-01-CK00	BB3-01-FL00	BB3-01-DL00	BB3-01-CL00
	1/4"	BB3-02-FK00	BB3-02-DK00	BB3-02-CK00	BB3-02-FL00	BB3-02-DL00	BB3-02-CL00
Piston Drain	1/8"	BB3-01-FR00	BB3-01-DR00	BB3-01-CR00	BB3-01-FS00	BB3-01-DS00	BB3-01-CS00
	1/4"	BB3-02-FR00	BB3-02-DR00	BB3-02-CR00	BB3-02-FS00	BB3-02-DS00	BB3-02-CS00
Manual Drain	1/8"	BA3-01-FK00	BA3-01-DK00	BA3-01-CK00	BA3-01-FL00	BA3-01-DL00	BA3-01-CL00
	1/4"	BA3-02-FK00	BA3-02-DK00	BA3-02-CK00	BA3-02-FL00	BA3-02-DL00	BA3-02-CL00
Piston Drain	1/8"	BA3-01-FR00	BA3-01-DR00	BA3-01-CR00	BA3-01-FS00	BA3-01-DS00	BA3-01-CS00
	1/4"	BA3-02-FR00	BA3-02-DR00	BA3-02-CR00	BA3-02-FS00	BA3-02-DS00	BA3-02-CS00

Options - To order an option supplied with the unit model, add the appropriate coded suffix letter in the designated position of the model number.