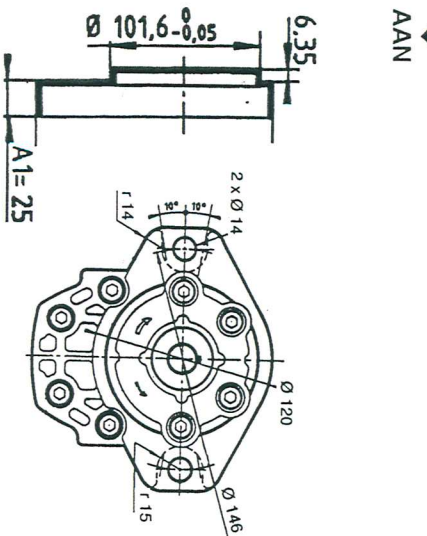


III-IV FLAT FRONT BODIES
CORPS AVANT PLATS
FLACHER VORDERKÖRPER

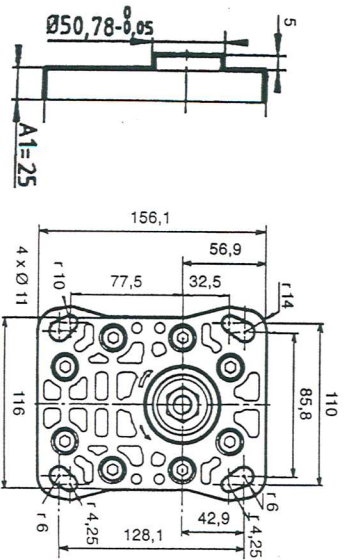
Without **ETANCHEITE** sur DIAMETRE de CENTRAGE
Sans **ABDICHTUNG AUF ZENTRIERDURCHMESSER**

With **Avec**



Dimension readings and approximate characteristics subject to modifications
Cotes dimensionnelles et caractéristiques approximatifs sous réserve de modifications
Änderungen inbezug auf Ausmasse und approximative Kennwerte vorbehalten

BAN



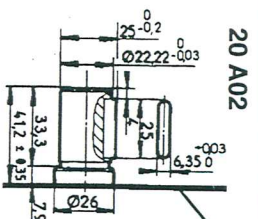
Requires a fabrication delay
Necessite un delai de fabrication
längere Lieferzeit

HYDRAULIC GEAR PUMPS
POMPES HYDRAULIQUES A ENGRENAGE
HYDRAULIK ZAHNRADPUMPEN

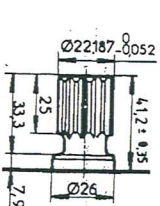
IX-X-XI DRIVING SHAFTS
ARBRES D'ENTRAÎNEMENT
ANTRIEBSWELLEN

Face of the support of the fixing flange
Face d'appui du flasque de fixation
Abstützfläche des Befestigungsflansches

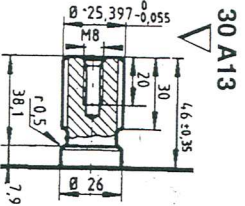
Maxi transmissible torque m/dan
Couple maxi transmissible m.dan
Max. übertragbares Drehmoment
M/Kp



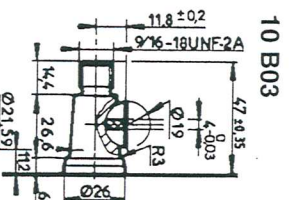
AAN (K) 29*



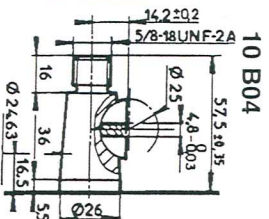
Involute spline to SAE Standard
13 teeth - 7/8" - Pitch 16/32 - Flat root
30° Pressure angle
Cannelures en développement - SAE
13 cannelures - 7/8" - Diametral Pitch 16/32
Angle de pression : 30°
Evolvente Flanken-SAE
13 Vielkeilwelle - 7/8" - Diametral Pitch 16/32
Druckwinkel 30°
AAN (K) 31*



Involute spline to SAE Standard
15 teeth - Pitch 16/32 - Flat root
30° Pressure angle
Cannelures en développement - SAE
15 cannelures - Diametral Pitch 16/32
Angle de pression : 30°
Evolvente Flanken-SAE
15 Vielkeilwelle - Diametral Pitch 16/32
Druckwinkel 30°
AAN (K) 49*



Supplied with washer
Livré avec rondelle fejn
Geliefert mit Bremscheibe
ref. 103 945
Supplied with nut
Livré avec écrou
Geliefert mit Mutter
ref. 100 734
53*



Supplied with nut
Livré avec écrou
Geliefert mit Mutter
ref. 101 877
80*

Taper - Cône - Kegel 1/8

BAN

SERIE
SERIE
REIHE

3

PUBLISHING 14 / 11 / 94
I/P/IC/1
AUSGABE

10 | 048 | 00

F.T 30994 5/13

